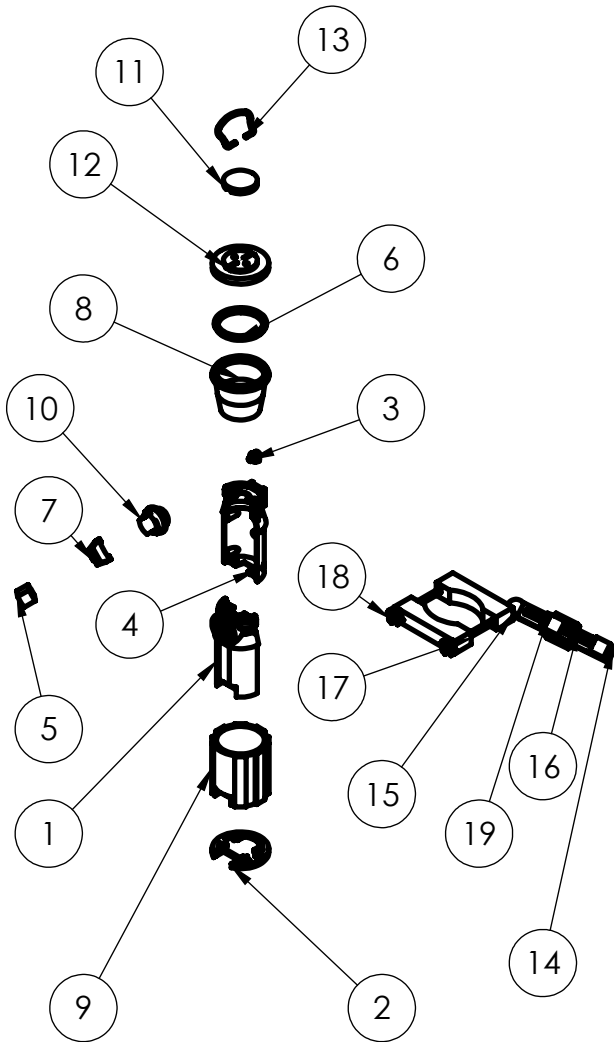
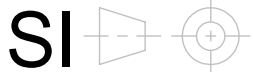


THE INFORMATION CONTAINED IN THIS DRAWING IS THE SOLE PROPERTY OF NC STATE UNIVERSITY. ANY REPRODUCTION IN PART OR WHOLE WITHOUT THE WRITTEN PERMISSION OF NC STATE UNIVERSITY IS PROHIBITED.  
FILE: LED Lantern Assembly Exploded



ITEM NO.	PART NUMBER	MATERIAL	QTY.
1	BackCase_Gray	ABS (PLASTIC)	1
2	BaseProject_Gray	ABS (PLASTIC)	1
3	ButtonProject_Gray	POLYESTER RESIN	1
4	FrontCase_Gray	ABS (PLASTIC)	1
5	HandleSpin_Gray	POLYESTER RESIN	1
6	Inner_Reflector_Gray	PE LOW/MEDIUM DENSITY PLASTIC	1
7	MidSpinHandle_Gray	POLYESTER RESIN	1
8	Outer_Lamp_Gray	PE LOW/MEDIUM DENSITY PLASTIC	1
9	RubberGripProject_Gray	BUTYL RUBBER	1
10	SpinConnection_Gray	POLYESTER RESIN	1
11	TopCapProject_Gray	ABS (PLASTIC)	1
12	BottomTopProject_Gray	ABS (PLASTIC)	1
13	HandleProject_Gray	1060 (METAL) ALLOY	1
14	Bottom Clamp_Gray	ALUMINUM	1
15	Bottom Support	ALUMINUM	1
16	Top Clamp_Gray	ALUMINUM	1
17	Top Support_Gray	ALUMINUM	1
18	Clamp Rod	IRON SUPERALLOY	3
19	Clamp Grip	IRON SUPERALLOY	3



**NORTH CAROLINA STATE UNIVERSITY**  
P.O. BOX 7801  
Raleigh, North Carolina

UNLESS OTHERWISE SPECIFIED  
DIMENSIONS ARE IN MILLIMETERS  
TOLERANCES ARE:  
FRACTIONS DECIMALS ANGLES  
+ .XX+ .XX + 1  
.XXX+.XXX

DRAWN  
**GRAY, AUSTON**  
MATERIAL  
**SEE BILL OF MATERIALS**

DATE  
**4/24/2017**  
SCALE  
**1:8**

TITLE  
**LANTERN ASSEMBLY**  
SIZE  
**A**  
PRT. NO.  
**1 of 2**  
#  
**1**